



Cordless Angle Impact Wrench DTL302

Satisfy Professional's Needs

LXT



For automotive maintenance

Max fastening
torque
340 N·m
6 seconds after seating,
when tightening

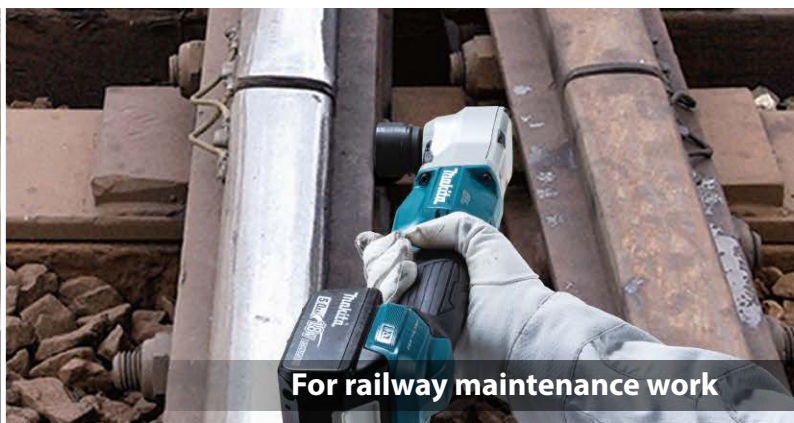
Nut-busting
torque
530 N·m
within 3 seconds,
when loosening

High power & High-speed fastening

Suitable for tight spaces in vehicle and farm equipment maintenance



For tractor tine replacement



For railway maintenance work

DTL302



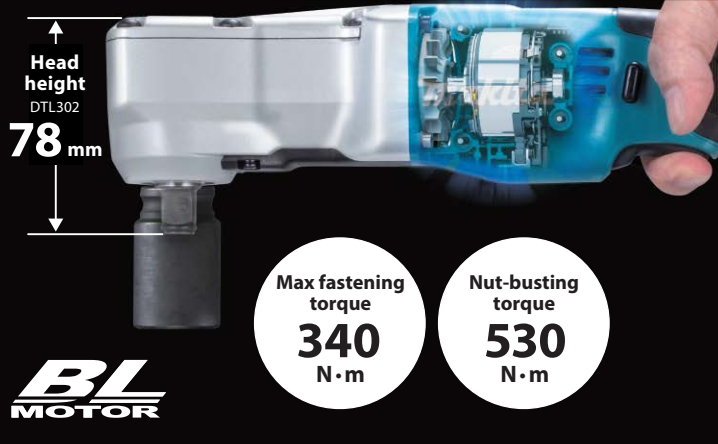
9.5mm [3/8"]
C ring
without hole

18V
LITHIUM-ION

BL **XPT**
MOTOR

High power & High-speed fastening

Slim body for tight spaces with high-power fastening



Auto-stop system in forward/reverse rotation modes

For continuous temporary fastening and preventing nuts from falling off during loosening



	Description	Application
Forward	Rotates in soft impact mode and stops immediately after impact starts.	Temporary fastening of bolts and nuts
Reverse	Rotates in hard impact mode and stops immediately after impact ends.	Preventing nut loss when loosening bolts and nuts

3-stage impact power selection



Mode	Max blows
Hard	4,000min ⁻¹
Medium	2,800min ⁻¹
Soft	1,800min ⁻¹

XPT

Switch panel

Reversing switch lever

LED job light

Excellent maneuverability

The center of gravity is close to the switch, minimizing hand fatigue.



Center of gravity



Slim Grip

115 mm circumference on the little finger side



LED job light

3 brightness levels

Charging Time

	Fast Charging DC18RC	DC18SD
BL1815N 1.5Ah 196449-1	15 min	30 min
BL1820B 2.0Ah 197254-9	24 min	45 min
BL1830B 3.0Ah 197599-5	22 min	60 min
BL1850B 5.0Ah 197280-8	45 min	110 min
BL1860B 6.0Ah 197422-4	55 min	130 min

Cordless Angle Impact Wrench

DTL302

- Variable Speed
- Brake
- Reversing
- Electronic 3-Speed
- Built-in Job Light

*1)EN62841-2-2
*2)impact tightening of fasteners of the maximum capacity of the tool

Standard Equipment :
Battery, Charger

Max fastening torque (Battery)	310 - 340 N·m (230 - 250 ft.lbs.)
Nut-busting torque (Battery)	500 - 530 N·m (370 - 390 ft.lbs.)
Square drive	BL1820B - BL1860B 9.5 mm (3/8")
No load speed	Hard / Med. / Soft: 0 - 3,200 / 0 - 1,500 / 0 - 1,000 min ⁻¹
Impacts per minute	Hard / Med. / Soft: 0 - 4,000 / 0 - 2,800 / 0 - 1,800 min ⁻¹
Head height	78.0 mm (3-1/16")
Vibration level*1	DTL302: 18.0 m/s ² (Mode*2)
Uncertainty (K) for Vibration*1	1.5 m/s ² (Mode *2)
Sound pressure level*1	96 dB(A)
Sound power level*1	104 dB(A)
Uncertainty (K) for Noise*1	3 dB(A)
Dimensions (L x W x H) (Battery)	396 - 414 x 80 x 86 - 92 mm (15-5/8 - 16-1/4 x 3-1/8 x 3-3/8 - 3-5/8")
Net weight (Battery)	Tool only - BL1860B 1.8 - 2.1 kg (4.0 - 4.6 lbs.)
	BL1820B - BL1860B

The net weight value includes the lightest and heaviest combination of the attachment(s) and battery cartridge(s) which are specified in the instruction manual.
Items of standard equipment and specifications may vary by country or area.

Makita Singapore Pte Ltd

7, Changi South Street 3, Singapore 486348
Phone : +65-6546-8700 Fax : +65-6546-8711
Email : msgproductteam@makita.com.sg
Website : www.makita.com.sg
Facebook : www.facebook.com/MakitaSG



VISIT OUR WEBSITE



DOWNLOAD LEAFLET

PRINTED IN SINGAPORE